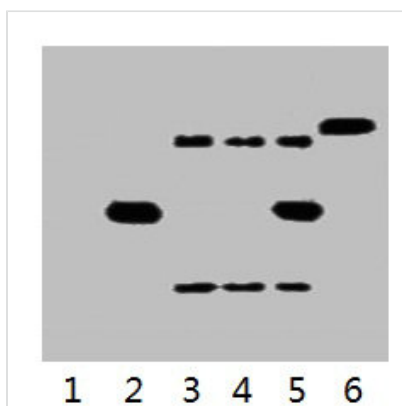




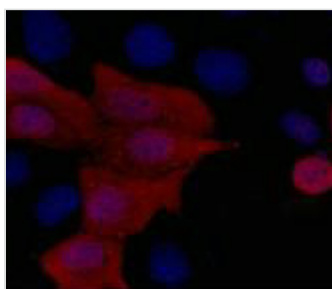
His-Tag Monoclonal Antibody

Product Code	CSB-MA000159
Storage	Upon receipt, store at -20°C or -80°C. Avoid repeated freeze.
Immunogen	Synthetic Peptide
Raised In	Mouse
Species Reactivity	N/A
Tested Applications	ELISA, WB, IF, IP; Recommended dilution: WB:1:500-1:5000, IF:1:50-1:200, IP:1:200-1:2000
Form	Liquid
Conjugate	Non-conjugated
Storage Buffer	PBS, pH 7.4, containing 0.5%BSA, 0.02% sodium azide as Preservative and 50% Glycerol.
Isotype	IgG
Product Type	Monoclonal Antibody
Target Names	His-Tag
Clone No.	8F7

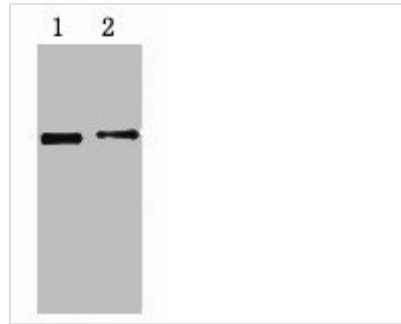
Image



IP antibody use: 5µg His Mouse IgG1 per ml Lysate, WB 1:3000
 Lane 1: untransfected 293 cell lysate
 Lane 2: transfected 293 cell lysate with His-tag fusion protein
 Lane 3: IP (untransfected 293 + anti-His mAb + Protein G agarose)
 Lane 4: IP (transfected 293 + normal Mouse IgG + Protein G agarose)
 Lane 5: IP (transfected 293 + anti-His mAb + Protein G agarose)
 Lane 6: Recombinant protein (E.coli)



IF analysis of 293 cells transfected with a His-tag protein, 1:1000 dilution (blue DAPI, red anti-His)



2 μ g His fusion protein + Primary antibody dilution
at 1) 1:5000 2) 1:10000

Usage

For Research Use Only. Not for use in diagnostic or therapeutic procedures.