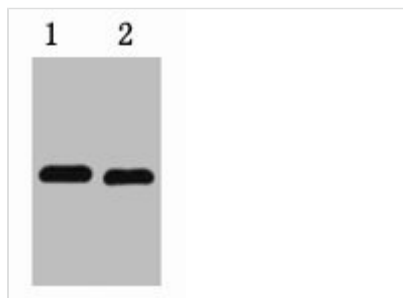




mCherry-Tag Monoclonal Antibody

Product Code	CSB-MA000165
Storage	Upon receipt, store at -20°C or -80°C. Avoid repeated freeze.
Immunogen	Recombinant Protein
Raised In	Mouse
Species Reactivity	N/A
Tested Applications	ELISA, WB; Recommended dilution: WB: 1:500-1:5000
Form	Liquid
Conjugate	Non-conjugated
Storage Buffer	PBS, pH 7.4, containing 0.5% BSA, 0.02% sodium azide as Preservative and 50% Glycerol.
Isotype	IgG
Product Type	Monoclonal Antibody
Immunogen Species	N/A
Target Names	mCherry-Tag
Clone No.	16C6

Image



1µg mCherry fusion protein+ Primary antibody dilution at 1) 1:5000 2) 1:10000

Usage

For Research Use Only. Not for use in diagnostic or therapeutic procedures.