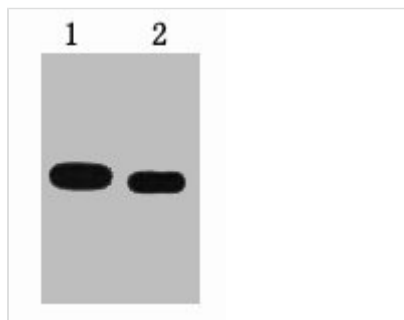




# E2-Tag Monoclonal Antibody

<b>Product Code</b>	CSB-MA000168
<b>Storage</b>	Upon receipt, store at -20°C or -80°C. Avoid repeated freeze.
<b>Immunogen</b>	Synthetic Peptide
<b>Raised In</b>	Mouse
<b>Species Reactivity</b>	N/A
<b>Tested Applications</b>	ELISA,WB;Recommended dilution:WB:1:500-1:5000
<b>Form</b>	Liquid
<b>Conjugate</b>	Non-conjugated
<b>Storage Buffer</b>	PBS, pH 7.4, containing 0.5%BSA, 0.02% sodium azide as Preservative and 50% Glycerol.
<b>Isotype</b>	IgG
<b>Product Type</b>	Monoclonal Antibody
<b>Immunogen Species</b>	N/A
<b>Target Names</b>	E2-Tag
<b>Clone No.</b>	24F4

**Image**

2 $\mu$ g E2 fusion protein+ Primary antibody dilution at 1) 1:50002) 1:10000

**Usage**

For Research Use Only. Not for use in diagnostic or therapeutic procedures.