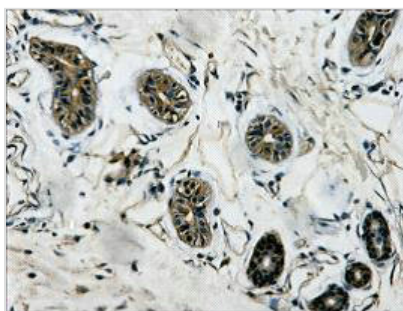




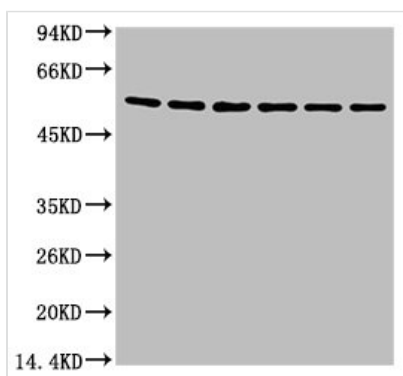
# TUBB3 Monoclonal Antibody

<b>Product Code</b>	CSB-MA000185
<b>Storage</b>	Upon receipt, store at -20°C or -80°C. Avoid repeated freeze.
<b>Uniprot No.</b>	Q13509
<b>Immunogen</b>	Synthetic Peptide
<b>Raised In</b>	Mouse
<b>Species Reactivity</b>	H,R,M,Mk,Dg,Ch,Hm,Rb,Sh,Insect,Yeast
<b>Tested Applications</b>	ELISA,WB,IHC;Recommended dilution:WB:1:500-1:5000,IHC:1:50-1:500
<b>Form</b>	Liquid
<b>Conjugate</b>	Non-conjugated
<b>Storage Buffer</b>	PBS, 50% glycerol, 0.05% Proclin 300, 0.05%BSA
<b>Isotype</b>	IgG
<b>Alias</b>	TUBB3; TUBB4; Tubulin beta-3 chain; Tubulin beta-4 chain; Tubulin beta-III
<b>Product Type</b>	Monoclonal Antibody
<b>Immunogen Species</b>	Homo sapiens (Human)
<b>Target Names</b>	TUBB3
<b>Clone No.</b>	21E5

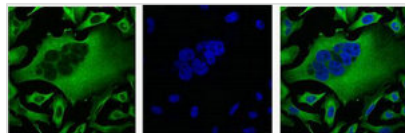
## Image



IHC Staining of Human colon tissue, diluted at 1:200.



Western blot analysis of A549 (1), Rat brain (2), Mouse brain (3), Chicken lung (4) and Rabbit testis (5), Sheep muscle (6), diluted at 1:5000.



IF analysis of HeLa with  $\beta$ -Tubulin Monoclonal Antibody(Left) and DAPI (Right) diluted at 1:100.

---

**Usage**

For Research Use Only. Not for use in diagnostic or therapeutic procedures.