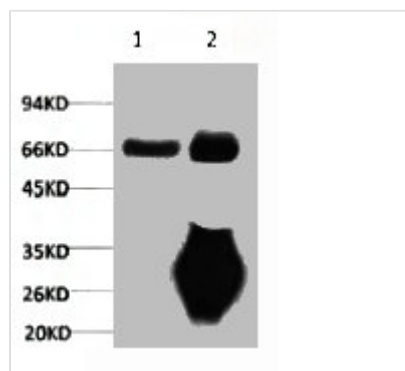




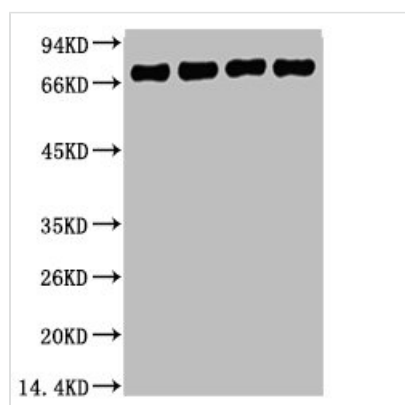
# LMNB1 Monoclonal Antibody

|                            |  |
|----------------------------|--|
| <b>Product Code</b>        | CSB-MA000191   |
| <b>Storage</b>             | Upon receipt, store at -20°C or -80°C. Avoid repeated freeze.                |
| <b>Uniprot No.</b>         | P20700   |
| <b>Immunogen</b>           | Recombinant Protein  |
| <b>Raised In</b>           | Mouse  |
| <b>Species Reactivity</b>  | Human,Mouse,Rat  |
| <b>Tested Applications</b> | ELISA,WB,IP;Recommended dilution:WB:1:500-1:5000,IP:1:200-1:2000             |
| <b>Form</b>                | Liquid   |
| <b>Conjugate</b>           | Non-conjugated   |
| <b>Storage Buffer</b>      | PBS, pH 7.4, containing 0.02% sodium azide as Preservative and 50% Glycerol. |
| <b>Isotype</b>             | IgG  |
| <b>Alias</b>               | LMNB1; LMN2; LMNB; Lamin-B1  |
| <b>Product Type</b>        | Monoclonal Antibody  |
| <b>Immunogen Species</b>   | Homo sapiens (Human)   |
| <b>Gene Names</b>          | LMNB1  |

## Image



1) Input: Mouse Brain Tissue Lysate 2) IP product: IP dilute 1:200



Western blot analysis of 1) HepG2, 2) 293T, 3) Mouse Brain Tissue, 4) Rat Brain Tissue, diluted at 1:5000.