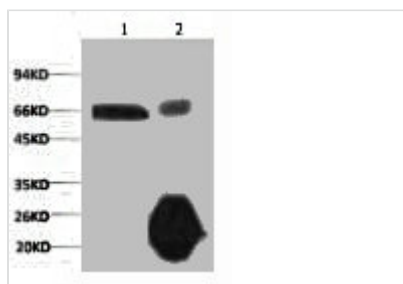




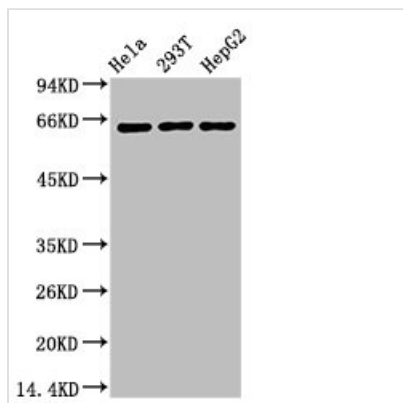
# RELA Monoclonal Antibody

<b>Product Code</b>	CSB-MA000209
<b>Storage</b>	Upon receipt, store at -20°C or -80°C. Avoid repeated freeze.
<b>Uniprot No.</b>	Q04206
<b>Immunogen</b>	Synthetic Peptide
<b>Raised In</b>	Mouse
<b>Species Reactivity</b>	Human,Mouse,Rat
<b>Tested Applications</b>	ELISA,WB,IF,IP;Recommended dilution:WB:1:500-1:5000,IF:1:50-1:200,IP:1:200-1:2000
<b>Form</b>	Liquid
<b>Conjugate</b>	Non-conjugated
<b>Storage Buffer</b>	PBS, 50% glycerol, 0.05% Proclin 300, 0.05%BSA
<b>Isotype</b>	IgG
<b>Product Type</b>	Monoclonal Antibody
<b>Immunogen Species</b>	H, M, R
<b>Target Names</b>	RELA
<b>Clone No.</b>	3G9

## Image



1) Input: HeLa Cell Lysate 2) IP product: IP dilute 1:200



Western blot analysis of 1) HeLa, 2) 293T, 3) HepG, diluted at 1:2000.

## Usage

For Research Use Only. Not for use in diagnostic or therapeutic procedures.