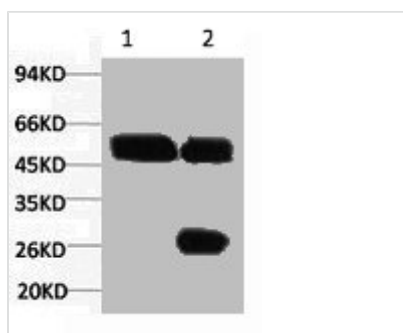




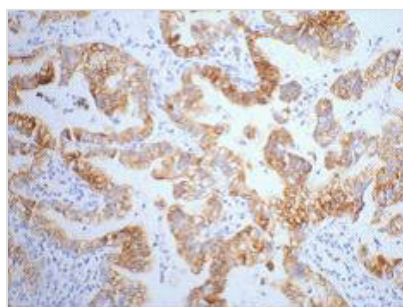
# KRT7 Monoclonal Antibody

<b>Product Code</b>	CSB-MA000210
<b>Storage</b>	Upon receipt, store at -20°C or -80°C. Avoid repeated freeze.
<b>Uniprot No.</b>	P08729
<b>Immunogen</b>	Synthetic Peptide
<b>Raised In</b>	Mouse
<b>Species Reactivity</b>	Human,Mouse,Rat
<b>Tested Applications</b>	ELISA,WB,IHC,IF,IP;Recommended dilution:WB:1:500-1:5000,IHC:1:50-1:500,IF:1:50-1:200,IP:1:200-1:2000
<b>Form</b>	Liquid
<b>Conjugate</b>	Non-conjugated
<b>Storage Buffer</b>	PBS, pH 7.4, containing 0.5%BSA, 0.02% sodium azide as Preservative and 50% Glycerol.
<b>Isotype</b>	IgG
<b>Product Type</b>	Monoclonal Antibody
<b>Immunogen Species</b>	H, M, R
<b>Target Names</b>	KRT7
<b>Clone No.</b>	29H3

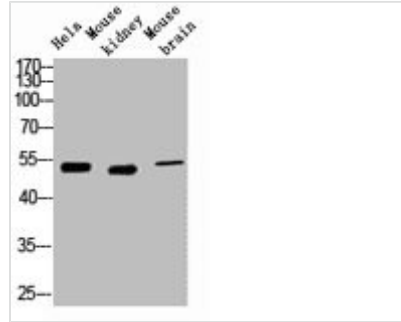
## Image



1) Input: HeLa Cell Lysate 2) IP product: IP dilute 1:200



IHC staining of human lung cancer tissue, diluted at 1:200.



Western blot analysis of 1) HeLa, 2) Mouse Kidney, 3) Mouse Brain, diluted at 1:2000.

**Usage**

For Research Use Only. Not for use in diagnostic or therapeutic procedures.