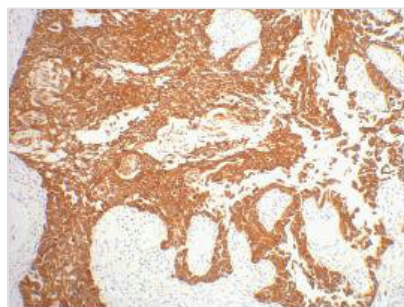




KRT16 Monoclonal Antibody

Product Code	CSB-MA000213
Storage	Upon receipt, store at -20°C or -80°C. Avoid repeated freeze.
Uniprot No.	P08779
Immunogen	Synthetic Peptide
Raised In	Mouse
Species Reactivity	Human, Mouse, Rat
Tested Applications	ELISA, IHC; Recommended dilution: IHC: 1:100-1:200
Form	Liquid
Conjugate	Non-conjugated
Storage Buffer	PBS, pH 7.4, containing 0.5% BSA, 0.02% sodium azide as Preservative and 50% Glycerol.
Isotype	IgG
Product Type	Monoclonal Antibody
Immunogen Species	H, M, R
Target Names	KRT16
Clone No.	5C1

Image


IHC staining of human gullet cancer tissue, diluted at 1:200.

Usage

For Research Use Only. Not for use in diagnostic or therapeutic procedures.