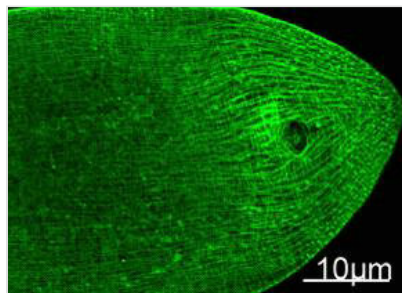




# Myosin Heavy Chain Monoclonal Antibody

<b>Product Code</b>	CSB-MA000215
<b>Storage</b>	Upon receipt, store at -20°C or -80°C. Avoid repeated freeze.
<b>Immunogen</b>	Synthetic Peptide
<b>Raised In</b>	Mouse
<b>Species Reactivity</b>	H,M,R,Fruit,Fly,Nematode
<b>Tested Applications</b>	ELISA,IF;Recommended dilution:IF:1:100-1:200
<b>Form</b>	Liquid
<b>Conjugate</b>	Non-conjugated
<b>Storage Buffer</b>	PBS, pH 7.4, containing 0.02% sodium azide as Preservative and 50% Glycerol.
<b>Isotype</b>	IgG
<b>Product Type</b>	Monoclonal Antibody
<b>Immunogen Species</b>	H, M, R, Fruit Fly, Nematode

## Image



Immunofluorescence Staining of nematode tissue with MYH mouse mAb (11C2) diluted at 1:100. (Provide by Tsinghua University) .