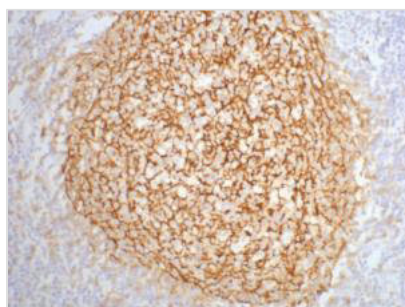




CR2 Monoclonal Antibody

Product Code	CSB-MA000217
Storage	Upon receipt, store at -20°C or -80°C. Avoid repeated freeze.
Uniprot No.	P20023
Immunogen	Synthetic Peptide
Raised In	Mouse
Species Reactivity	Human,Mouse,Rat
Tested Applications	ELISA,IHC;Recommended dilution:IHC:1:100-1:200
Form	Liquid
Conjugate	Non-conjugated
Storage Buffer	PBS, pH 7.4, containing 0.5%BSA, 0.02% sodium azide as Preservative and 50% Glycerol.
Isotype	IgG
Alias	CR2; C3DR; Complement receptor type 2; Cr2; Complement C3d receptor; Epstein-Barr virus receptor; EBV receptor; CD21
Product Type	Monoclonal Antibody
Immunogen Species	Homo sapiens (Human)
Target Names	CR2
Clone No.	6F12

Image


IHC staining of human tonsil tissue, diluted at 1:200.

Usage

For Research Use Only. Not for use in diagnostic or therapeutic procedures.