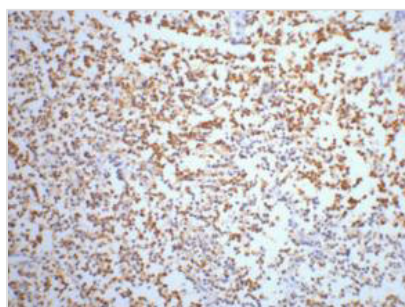




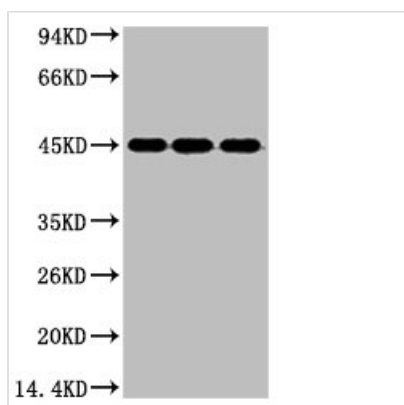
# ENO2 Monoclonal Antibody

<b>Product Code</b>	CSB-MA000224
<b>Storage</b>	Upon receipt, store at -20°C or -80°C. Avoid repeated freeze.
<b>Uniprot No.</b>	P09104
<b>Immunogen</b>	Synthetic Peptide
<b>Raised In</b>	Mouse
<b>Species Reactivity</b>	Human,Mouse,Rat
<b>Tested Applications</b>	ELISA,WB,IHC;Recommended dilution:WB:1:500-1:5000,IHC:1:50-1:500
<b>Form</b>	Liquid
<b>Conjugate</b>	Non-conjugated
<b>Storage Buffer</b>	PBS, pH 7.4, containing 0.5%BSA, 0.02% sodium azide as Preservative and 50% Glycerol.
<b>Isotype</b>	IgG
<b>Alias</b>	ENO2; Gamma-enolase; 2-phospho-D-glycerate hydro-lyase; Enolase 2; Neural enolase; Neuron-specific enolase; NSE
<b>Product Type</b>	Monoclonal Antibody
<b>Immunogen Species</b>	Homo sapiens (Human)
<b>Target Names</b>	ENO2
<b>Clone No.</b>	5C7

## Image



IHC staining of Human small cell carcinoma of lung tissue, diluted at 1:200.



Western blot analysis of 1) Hela, 2) Jurkat, 3) 293T cell lysates, diluted at 1:3000.



---

**Usage**

For Research Use Only. Not for use in diagnostic or therapeutic procedures.