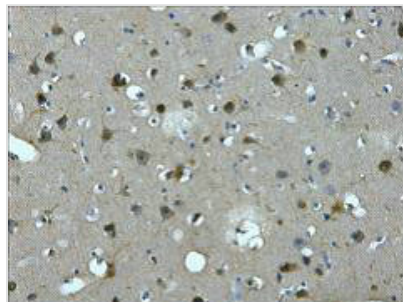




MAP2 Monoclonal Antibody

| | |
|----------------------------|---|
| Product Code | CSB-MA000225 |
| Storage | Upon receipt, store at -20°C or -80°C. Avoid repeated freeze. |
| Uniprot No. | P11137 |
| Immunogen | Synthetic Peptide |
| Raised In | Mouse |
| Species Reactivity | Human,Mouse,Rat |
| Tested Applications | ELISA,IHC;Recommended dilution:IHC:1:100-1:200 |
| Form | Liquid |
| Conjugate | Non-conjugated |
| Storage Buffer | PBS, pH 7.4, containing 0.5%BSA, 0.02% sodium azide as Preservative and 50% Glycerol. |
| Isotype | IgG |
| Alias | MAP2; Microtubule-associated protein 2; MAP-2 |
| Product Type | Monoclonal Antibody |
| Immunogen Species | Homo sapiens (Human) |
| Target Names | MAP2 |
| Clone No. | 21G5 |

Image

IHC staining of Human brain tissue paraffin-embedded, diluted at 1:200.

Usage

For Research Use Only. Not for use in diagnostic or therapeutic procedures.