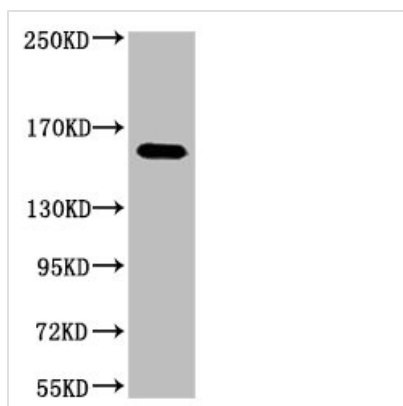




ERBB2 Monoclonal Antibody

Product Code	CSB-MA000237
Storage	Upon receipt, store at -20°C or -80°C. Avoid repeated freeze.
Uniprot No.	P04626
Immunogen	Synthetic Peptide
Raised In	Mouse
Species Reactivity	Human
Tested Applications	ELISA, WB; Recommended dilution: WB: 1:500-1:5000
Form	Liquid
Conjugate	Non-conjugated
Storage Buffer	PBS, pH 7.4, containing 0.5% BSA, 0.02% sodium azide as Preservative and 50% Glycerol.
Isotype	IgG
Alias	ERBB2; HER2; MLN19; NEU; NGL; Receptor tyrosine-protein kinase erbB-2; Metastatic lymph node gene 19 protein; MLN 19; Proto-oncogene Neu; Proto-oncogene c-ErbB-2; Tyrosine kinase-type cell surface receptor HER2; p185erbB2; CD340
Product Type	Monoclonal Antibody
Immunogen Species	Homo sapiens (Human)
Target Names	ERBB2
Clone No.	2E1

Image



Western blot analysis of 1) HeLa, 2) 293, 3) Jurkat, diluted at 1:2000.

Usage For Research Use Only. Not for use in diagnostic or therapeutic procedures.