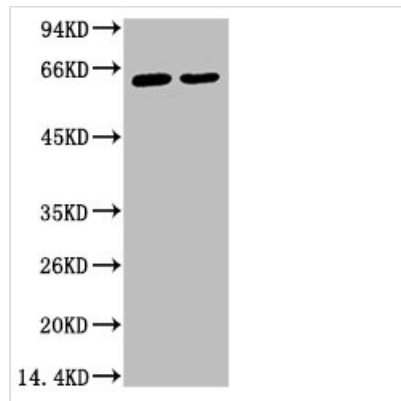




KRT6A Monoclonal Antibody

Product Code	CSB-MA000238
Storage	Upon receipt, store at -20°C or -80°C. Avoid repeated freeze.
Uniprot No.	P02538/P04259/P48668
Immunogen	Synthetic Peptide
Raised In	Mouse
Species Reactivity	Human
Tested Applications	ELISA,WB;Recommended dilution:WB:1:500-1:5000
Form	Liquid
Conjugate	Non-conjugated
Storage Buffer	PBS, pH 7.4, containing 0.02% sodium azide as Preservative and 50% Glycerol.
Isotype	IgG
Alias	Keratin type II cytoskeletal 6A/B/C
Product Type	Monoclonal Antibody
Immunogen Species	Homo sapiens (Human)
Clone No.	27F11

Image



Western blot analysis of 1) HeLa, 2) HepG2, diluted at 1:2000.

Usage

For Research Use Only. Not for use in diagnostic or therapeutic procedures.