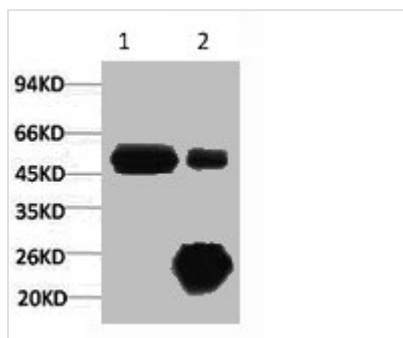




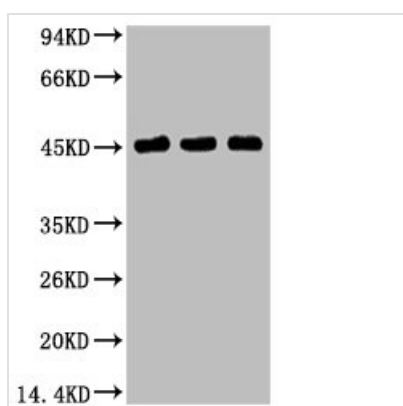
KRT17 Monoclonal Antibody

Product Code	CSB-MA000239
Storage	Upon receipt, store at -20°C or -80°C. Avoid repeated freeze.
Uniprot No.	Q04695
Immunogen	Synthetic Peptide
Raised In	Mouse
Species Reactivity	Human
Tested Applications	ELISA, WB, IP; Recommended dilution: WB: 1:500-1:5000, IP: 1:200-1:2000
Form	Liquid
Conjugate	Non-conjugated
Storage Buffer	PBS, pH 7.4, containing 0.02% sodium azide as Preservative and 50% Glycerol.
Isotype	IgG
Alias	KRT17; Keratin, type I cytoskeletal 17; 39.1; Cytokeratin-17; CK-17; Keratin-17; K17
Product Type	Monoclonal Antibody
Immunogen Species	Homo sapiens (Human)
Target Names	KRT17
Clone No.	23G2

Image



1) Input: HeLa Cell Lysate 2) IP product: IP dilute 1:200



Western blot analysis of 1) HeLa, 2) MCF7, 3) 293T, diluted at 1:2000.



Usage

For Research Use Only. Not for use in diagnostic or therapeutic procedures.