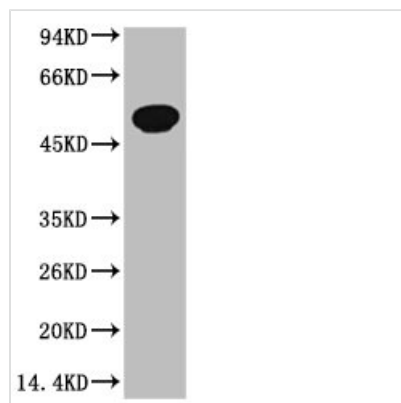




# TUBB3 Monoclonal Antibody

<b>Product Code</b>	CSB-MA000273
<b>Storage</b>	Upon receipt, store at -20°C or -80°C. Avoid repeated freeze.
<b>Uniprot No.</b>	Q13509
<b>Immunogen</b>	Synthetic Peptide
<b>Raised In</b>	Mouse
<b>Species Reactivity</b>	Zebrafish
<b>Tested Applications</b>	ELISA, WB; Recommended dilution: WB: 1:500-1:5000
<b>Form</b>	Liquid
<b>Conjugate</b>	Non-conjugated
<b>Storage Buffer</b>	PBS, pH 7.4, containing 0.5% BSA, 0.02% sodium azide as Preservative and 50% Glycerol.
<b>Isotype</b>	IgG
<b>Alias</b>	TUBB3; TUBB4; Tubulin beta-3 chain; Tubulin beta-4 chain; Tubulin beta-III
<b>Product Type</b>	Monoclonal Antibody
<b>Immunogen Species</b>	Homo sapiens (Human)
<b>Target Names</b>	TUBB3
<b>Clone No.</b>	20C10

## Image



Western blot analysis of Zebrafish skeletal muscle, (Zebrafish Specific) diluted at 1:5000.

## Usage

For Research Use Only. Not for use in diagnostic or therapeutic procedures.