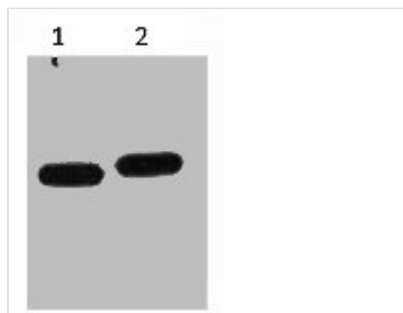




mCherry Monoclonal Antibody

Product Code	CSB-MA000284
Storage	Upon receipt, store at -20°C or -80°C. Avoid repeated freeze.
Immunogen	Recombinant Protein
Raised In	Mouse
Species Reactivity	N/A
Tested Applications	ELISA, WB; Recommended dilution: WB: 1:500-1:5000
Form	Liquid
Conjugate	Non-conjugated
Storage Buffer	PBS, pH 7.4, containing 0.02% sodium azide as Preservative and 50% Glycerol.
Isotype	IgG
Product Type	Monoclonal Antibody
Immunogen Species	N/A

Image



Western blot analysis of mCherry recombinant protein, diluted at 1) 1:5000 2) 1:10000