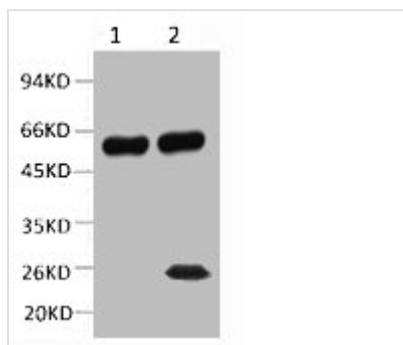




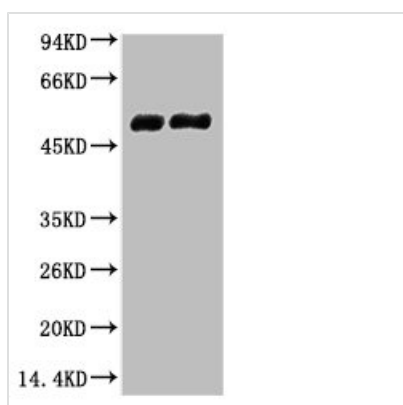
TUBB2A Monoclonal Antibody

Product Code	CSB-MA000312
Storage	Upon receipt, store at -20°C or -80°C. Avoid repeated freeze.
Uniprot No.	Q13885
Immunogen	Synthetic Peptide
Raised In	Mouse
Species Reactivity	Mouse,Rat,Human
Tested Applications	ELISA,WB,IP;Recommended dilution:WB:1:500-1:5000,IP:1:200-1:2000
Form	Liquid
Conjugate	Non-conjugated
Storage Buffer	PBS, pH 7.4, containing 0.5%BSA, 0.02% sodium azide as Preservative and 50% Glycerol.
Isotype	IgG
Alias	Tubulin beta-2A chain
Product Type	Monoclonal Antibody
Immunogen Species	Homo sapiens (Human)
Target Names	TUBB2A
Clone No.	28B6

Image



1) Input: Mouse Brain Tissue Lysate 2) IP product: IP dilute 1: 200 Western blot analysis: primary antibody : 1: 10000 Secondary antibody: Goat anti-Mouse IgG, Light chain specific (S003), 1: 5000



Western blot analysis of 1) Mouse Brain tissue, 2) Rat Brain tissue, diluted at 1:100000.



Usage

For Research Use Only. Not for use in diagnostic or therapeutic procedures.