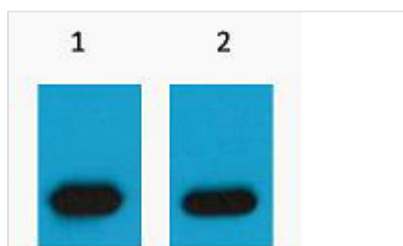




# mCherry-Tag Polyclonal Antibody

<b>Product Code</b>	CSB-PA000348
<b>Storage</b>	Upon receipt, store at -20°C or -80°C. Avoid repeated freeze.
<b>Immunogen</b>	Recombinant Protein
<b>Raised In</b>	Mouse
<b>Species Reactivity</b>	N/A
<b>Tested Applications</b>	WB; WB: 1:5000 -10000
<b>Form</b>	Liquid
<b>Conjugate</b>	Non-conjugated
<b>Storage Buffer</b>	PBS, pH 7.4, containing 0.02% sodium azide as Preservative and 50% Glycerol.
<b>Isotype</b>	IgG
<b>Alias</b>	0

## Image



Western blot analysis of mCherry Recombinant protein, diluted at 1) 1:5000 2) 1:10000