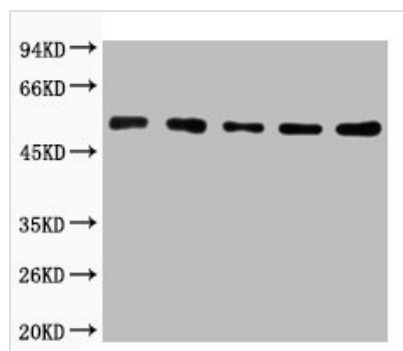




# TUBA1A/TUBA1B Antibody

|                            |  |
|----------------------------|--|
| <b>Product Code</b>        | CSB-PA000353   |
| <b>Storage</b>             | Upon receipt, store at -20°C or -80°C. Avoid repeated freeze.                |
| <b>Uniprot No.</b>         | Q71U36/P68363  |
| <b>Immunogen</b>           | Recombinant Protein  |
| <b>Raised In</b>           | Rabbit   |
| <b>Species Reactivity</b>  | Human,Mouse,Rat  |
| <b>Tested Applications</b> | WB;WB:1:2000   |
| <b>Form</b>                | Liquid   |
| <b>Conjugate</b>           | Non-conjugated   |
| <b>Storage Buffer</b>      | PBS, pH 7.4, containing 0.02% sodium azide as Preservative and 50% Glycerol. |
| <b>Isotype</b>             | IgG  |
| <b>Alias</b>               | Tubulin alpha-1A chain   |
| <b>Immunogen Species</b>   | Homo sapiens (Human)   |
| <b>Target Names</b>        | TUBA1A/TUBA1B  |

## Image



Western blot analysis of 1) Mouse skeletal muscle tissue, 2) Mouse kidney tissue, 3) Mouse Heart Tissue, 4) Mouse brain tissue, 5) Mouse Liver tissue, diluted at 1:2000.