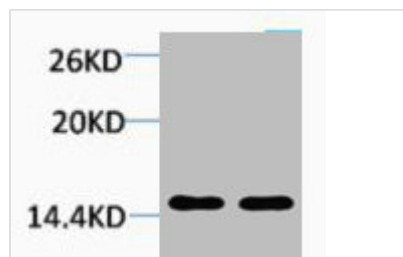




# Mono-Methyl-Histone H1 (Lys25) Antibody

<b>Product Code</b>	CSB-PA000424
<b>Storage</b>	Upon receipt, store at -20°C or -80°C. Avoid repeated freeze.
<b>Uniprot No.</b>	Q02539/P16403/P16402/P10412
<b>Immunogen</b>	Synthetic Peptide
<b>Raised In</b>	Rabbit
<b>Species Reactivity</b>	Human,Mouse,Rat
<b>Tested Applications</b>	WB, ELISA; WB:1:500-1:1000, ELISA:1:20000
<b>Form</b>	Liquid
<b>Conjugate</b>	Non-conjugated
<b>Storage Buffer</b>	PBS, pH 7.4, containing 0.02% sodium azide as Preservative and 50% Glycerol.
<b>Isotype</b>	IgG
<b>Alias</b>	HIST1H1A; H1F1; Histone H1.1; Histone H1a; HIST1H1C; H1F2; Histone H1.2; Histone H1c; Histone H1d; Histone H1s-1; HIST1H1D; H1F3; Histone H1.3; Histone H1c; Histone H1s-2; HIST1H1E; H1F4; Histone H1.4; Histone H1b; Histone H1s-4
<b>Immunogen Species</b>	Homo sapiens (Human)
<b>Target Names</b>	HIST1H1A/HIST1H1C/HIST1H1D/HIST1H1E

## Image



Western blot analysis of 1) HeLa, 2) 3T3, diluted at 1:2000.