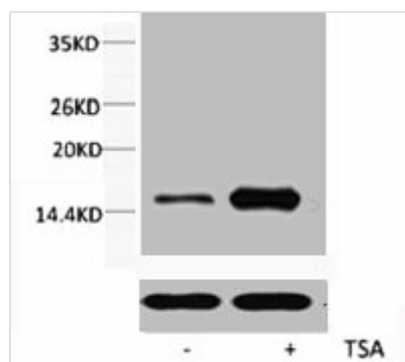




# Acetyl-Histone H3 (Lys56) Antibody

|                            |   |
|----------------------------|---|
| <b>Product Code</b>        | CSB-PA000433  |
| <b>Storage</b>             | Upon receipt, store at -20°C or -80°C. Avoid repeated freeze.   |
| <b>Uniprot No.</b>         | P68431/Q71DI3/P84243  |
| <b>Immunogen</b>           | Synthetic Peptide   |
| <b>Raised In</b>           | Rabbit  |
| <b>Species Reactivity</b>  | Human,Mouse,Rat   |
| <b>Tested Applications</b> | WB, ELISA; WB:1:500-1:1000, ELISA:1:20000   |
| <b>Form</b>                | Liquid  |
| <b>Conjugate</b>           | Non-conjugated  |
| <b>Storage Buffer</b>      | PBS, pH 7.4, containing 0.02% sodium azide as Preservative and 50% Glycerol.  |
| <b>Isotype</b>             | IgG   |
| <b>Alias</b>               | HIST1H3A; H3FA; HIST1H3B; H3FL; HIST1H3C; H3FC; HIST1H3D; H3FB; HIST1H3E; H3FD; HIST1H3F; H3FI; HIST1H3G; H3FH; HIST1H3H; H3FK; HIST1H3I; H3FF; HIST1H3J; H3FJ; Histone H3.1; Histone H3/a; Histone H3/b; Histone H3/c; Histone H3/d; Histone H3/f; Histone H3/ |
| <b>Immunogen Species</b>   | Homo sapiens (Human)  |
| <b>Target Names</b>        | HIST1H3A/HIST2H3A/H3F3A   |

## Image



Western blot analysis of extracts from HeLa cells, untreated (-) or treated, 1:2000.