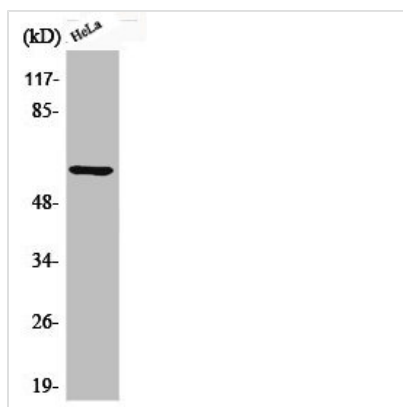




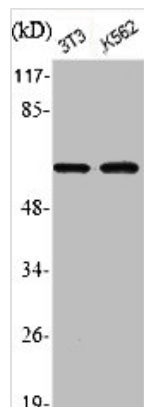
Phospho-AKT1 (S246) Antibody

Product Code	CSB-PA000465
Storage	Upon receipt, store at -20°C or -80°C. Avoid repeated freeze.
Uniprot No.	P31749
Immunogen	Synthesized peptide derived from Human Akt1 around the phosphorylation site of S246.
Raised In	Rabbit
Species Reactivity	Human,Mouse,Rat
Tested Applications	WB, IHC, IF, ELISA; WB:1:500-1:2000, IHC:1:100-1:300, IF:1:200-1:1000, ELISA:1:5000
Form	Liquid
Conjugate	Non-conjugated
Storage Buffer	Liquid in PBS containing 50% glycerol, 0.5% BSA and 0.02% sodium azide.
Purification Method	The antibody was affinity-purified from rabbit antiserum by affinity-chromatography using epitope-specific immunogen.
Isotype	IgG
Alias	AKT1; PKB; RAC; RAC-alpha serine/threonine-protein kinase; Protein kinase B; PKB; Protein kinase B alpha; PKB alpha; Proto-oncogene c-Akt; RAC-PK-alpha
Immunogen Species	Homo sapiens (Human)
Target Names	AKT1

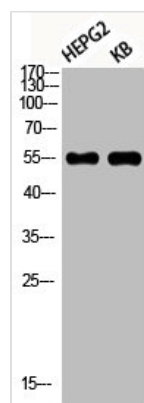
Image



Western Blot analysis of HeLa cells using Phospho-Akt1 (S246) Polyclonal Antibody



Western Blot analysis of NIH-3T3 K562 cells
using Phospho-Akt1 (S246) Polyclonal Antibody



Western Blot analysis of HEPG2 KB using
Phospho-Akt1 (S246) Polyclonal Antibody