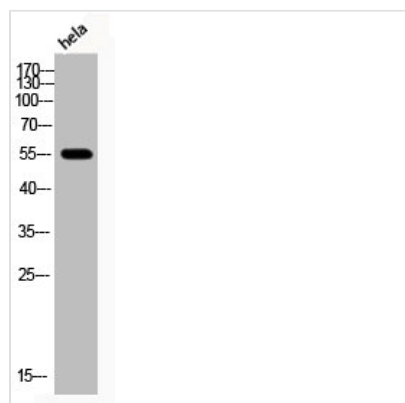




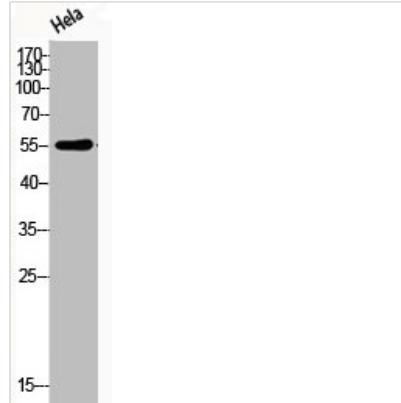
# Phospho-AKT1/AKT2/AKT3 (T308) Antibody

<b>Product Code</b>	CSB-PA000467
<b>Storage</b>	Upon receipt, store at -20°C or -80°C. Avoid repeated freeze.
<b>Uniprot No.</b>	P31749/P31751/Q9Y243
<b>Immunogen</b>	Synthesized peptide derived from Human Akt around the phosphorylation site of T308.
<b>Raised In</b>	Rabbit
<b>Species Reactivity</b>	Human,Mouse,Rat,Monkey
<b>Tested Applications</b>	WB, IHC, ELISA; WB:1:500-1:2000, IHC:1:100-1:300, ELISA:1:10000
<b>Form</b>	Liquid
<b>Conjugate</b>	Non-conjugated
<b>Storage Buffer</b>	Liquid in PBS containing 50% glycerol, 0.5% BSA and 0.02% sodium azide.
<b>Purification Method</b>	The antibody was affinity-purified from rabbit antiserum by affinity-chromatography using epitope-specific immunogen.
<b>Isotype</b>	IgG
<b>Alias</b>	AKT1; PKB; RAC; RAC-alpha serine/threonine-protein kinase; Protein kinase B; PKB; Protein kinase B alpha; PKB alpha; Proto-oncogene c-Akt; RAC-PK-alpha; AKT2; RAC-beta serine/threonine-protein kinase; Protein kinase Akt-2; Protein kinase B
<b>Immunogen Species</b>	Homo sapiens (Human)
<b>Target Names</b>	AKT1/AKT2/AKT3

## Image



Western Blot analysis of hela cells using Phospho-Akt (T308) Polyclonal Antibody



Western Blot analysis of HELA cells using Phospho-Akt (T308) Polyclonal Antibody

## Usage

For Research Use Only. Not for use in diagnostic or therapeutic procedures.