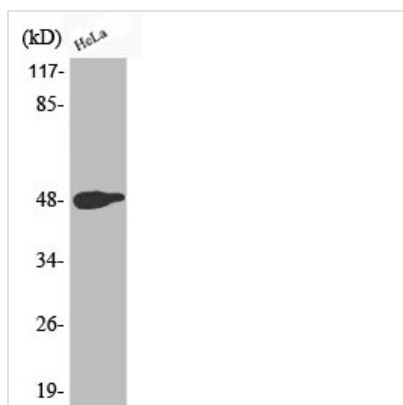




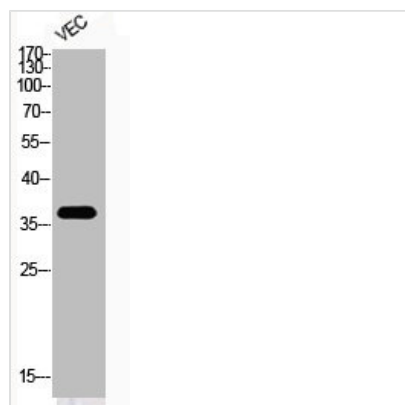
Phospho-JUN (T239) Antibody

| | |
|----------------------------|--|
| Product Code | CSB-PA000473 |
| Storage | Upon receipt, store at -20°C or -80°C. Avoid repeated freeze. |
| Uniprot No. | P05412 |
| Immunogen | Synthesized peptide derived from Human AP-1 around the phosphorylation site of T239. |
| Raised In | Rabbit |
| Species Reactivity | Human,Mouse,Rat |
| Tested Applications | WB, IHC, IP, ELISA; WB:1:500-1:2000, IHC:1:100-1:300, IP:2-5ug, ELISA:1:20000 |
| Form | Liquid |
| Conjugate | Non-conjugated |
| Storage Buffer | Liquid in PBS containing 50% glycerol, 0.5% BSA and 0.02% sodium azide. |
| Purification Method | The antibody was affinity-purified from rabbit antiserum by affinity-chromatography using epitope-specific immunogen. |
| Isotype | IgG |
| Alias | JUN; Transcription factor AP-1; Activator protein 1; AP1; Proto-oncogene c-Jun; V-jun avian sarcoma virus 17 oncogene homolog; p39 |
| Immunogen Species | Homo sapiens (Human) |
| Target Names | JUN |

Image



Western Blot analysis of HeLa cells using Phospho-AP-1 (T239) Polyclonal Antibody



Western Blot analysis of VEC cells using
Phospho-AP-1 (T239) Polyclonal Antibody