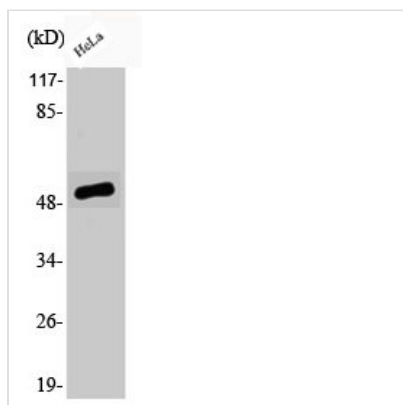




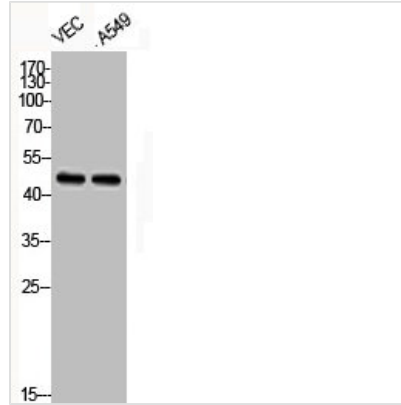
Phospho-ATF2 (S62) Antibody

Product Code	CSB-PA000478
Storage	Upon receipt, store at -20°C or -80°C. Avoid repeated freeze.
Uniprot No.	P15336
Immunogen	Synthesized peptide derived from Human ATF-2 around the phosphorylation site of S62.
Raised In	Rabbit
Species Reactivity	Human,Mouse,Rat
Tested Applications	WB, IHC, IP, ELISA; WB:1:500-1:2000, IHC:1:100-1:300, IP:2-5ug, ELISA:1:20000
Form	Liquid
Conjugate	Non-conjugated
Storage Buffer	Liquid in PBS containing 50% glycerol, 0.5% BSA and 0.02% sodium azide.
Purification Method	The antibody was affinity-purified from rabbit antiserum by affinity-chromatography using epitope-specific immunogen.
Isotype	IgG
Alias	ATF2; CREB2; CREBP1; Cyclic AMP-dependent transcription factor ATF-2; cAMP-dependent transcription factor ATF-2; Activating transcription factor 2; Cyclic AMP-responsive element-binding protein 2; CREB-2; cAMP-responsive element-binding pro
Immunogen Species	Homo sapiens (Human)
Target Names	ATF2

Image



Western Blot analysis of HeLa cells using Phospho-ATF-2 (S62) Polyclonal Antibody



Western Blot analysis of VEC A549 cells using Phospho-ATF-2 (S62) Polyclonal Antibody

Usage

For Research Use Only. Not for use in diagnostic or therapeutic procedures.