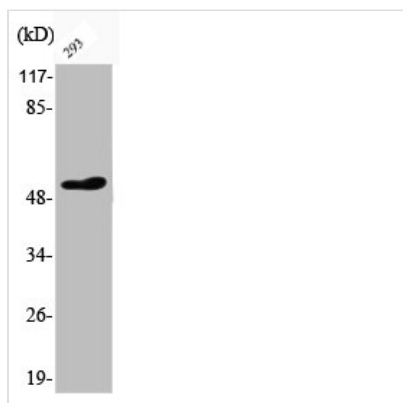




# Phospho-ATF2 (T73) Antibody

<b>Product Code</b>	CSB-PA000480
<b>Storage</b>	Upon receipt, store at -20°C or -80°C. Avoid repeated freeze.
<b>Uniprot No.</b>	P15336
<b>Immunogen</b>	Synthesized peptide derived from Human ATF-2 around the phosphorylation site of T73.
<b>Raised In</b>	Rabbit
<b>Species Reactivity</b>	Human,Mouse,Rat
<b>Tested Applications</b>	WB, IHC, IP, ELISA; WB:1:500-1:2000, IHC:1:100-1:300, IP:2-5ug, ELISA:1:20000
<b>Form</b>	Liquid
<b>Conjugate</b>	Non-conjugated
<b>Storage Buffer</b>	Liquid in PBS containing 50% glycerol, 0.5% BSA and 0.02% sodium azide.
<b>Purification Method</b>	The antibody was affinity-purified from rabbit antiserum by affinity-chromatography using epitope-specific immunogen.
<b>Isotype</b>	IgG
<b>Alias</b>	ATF2; CREB2; CREBP1; Cyclic AMP-dependent transcription factor ATF-2; cAMP-dependent transcription factor ATF-2; Activating transcription factor 2; Cyclic AMP-responsive element-binding protein 2; CREB-2; cAMP-responsive element-binding pro
<b>Immunogen Species</b>	Homo sapiens (Human)
<b>Target Names</b>	ATF2

## Image



Western Blot analysis of 293 cells using Phospho-ATF2 (T73) Polyclonal Antibody