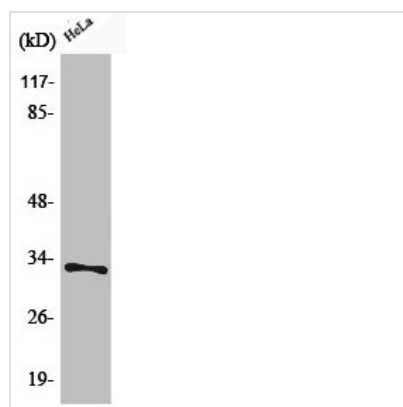




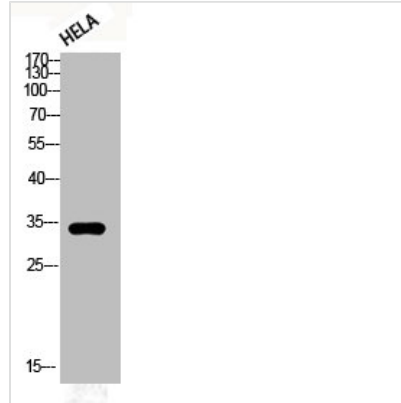
Phospho-CDK1 (T161) Antibody

Product Code	CSB-PA000492
Storage	Upon receipt, store at -20°C or -80°C. Avoid repeated freeze.
Uniprot No.	P06493
Immunogen	Synthesized peptide derived from Human Cdc2 around the phosphorylation site of T161.
Raised In	Rabbit
Species Reactivity	Human,Mouse,Rat
Tested Applications	WB, IHC, ELISA; WB:1:500-1:2000, IHC:1:100-1:300, ELISA:1:5000
Form	Liquid
Conjugate	Non-conjugated
Storage Buffer	Liquid in PBS containing 50% glycerol, 0.5% BSA and 0.02% sodium azide.
Purification Method	The antibody was affinity-purified from rabbit antiserum by affinity-chromatography using epitope-specific immunogen.
Isotype	IgG
Alias	CDK1; CDC2; CDC28A; CDKN1; P34CDC2; Cyclin-dependent kinase 1; CDK1; Cell division control protein 2 homolog; Cell division protein kinase 1; p34 protein kinase
Immunogen Species	Homo sapiens (Human)
Target Names	CDK1

Image



Western Blot analysis of HeLa cells using Phospho-Cdc2 (T161) Polyclonal Antibody



Western Blot analysis of HELA cells using Phospho-Cdc2 (T161) Polyclonal Antibody

Usage

For Research Use Only. Not for use in diagnostic or therapeutic procedures.