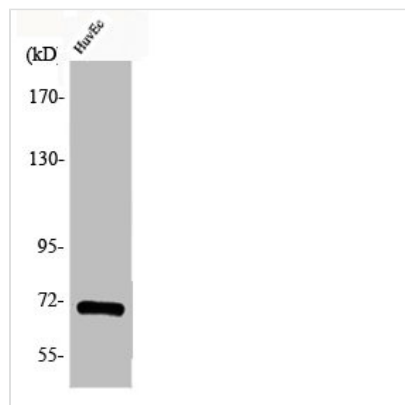




Phospho-CDC25A (S75) Antibody

Product Code	CSB-PA000494
Storage	Upon receipt, store at -20°C or -80°C. Avoid repeated freeze.
Uniprot No.	P30304
Immunogen	Synthesized peptide derived from Human Cdc25A around the phosphorylation site of S75.
Raised In	Rabbit
Species Reactivity	Human,Mouse,Rat
Tested Applications	WB, IHC, ELISA; WB:1:500-1:2000, IHC:1:100-1:300, ELISA:1:5000
Form	Liquid
Conjugate	Non-conjugated
Storage Buffer	Liquid in PBS containing 50% glycerol, 0.5% BSA and 0.02% sodium azide.
Purification Method	The antibody was affinity-purified from rabbit antiserum by affinity-chromatography using epitope-specific immunogen.
Isotype	IgG
Alias	CDC25A; M-phase inducer phosphatase 1; Dual specificity phosphatase Cdc25A
Immunogen Species	Homo sapiens (Human)
Target Names	CDC25A

Image



Western Blot analysis of HuvEc cells using Phospho-Cdc25A (S75) Polyclonal Antibody