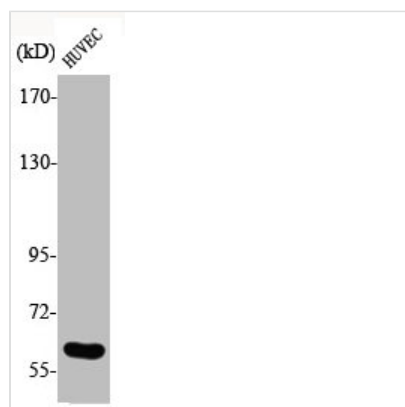




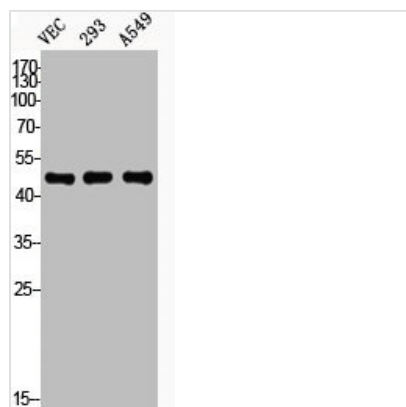
Phospho-CDC25C (S216) Antibody

| | |
|----------------------------|---|
| Product Code | CSB-PA000496 |
| Storage | Upon receipt, store at -20°C or -80°C. Avoid repeated freeze. |
| Uniprot No. | P30307 |
| Immunogen | Synthesized peptide derived from Human Cdc25C around the phosphorylation site of S216. |
| Raised In | Rabbit |
| Species Reactivity | Human |
| Tested Applications | WB, IHC, ELISA; WB:1:500-1:2000, IHC:1:100-1:300, ELISA:1:10000 |
| Form | Liquid |
| Conjugate | Non-conjugated |
| Storage Buffer | Liquid in PBS containing 50% glycerol, 0.5% BSA and 0.02% sodium azide. |
| Purification Method | The antibody was affinity-purified from rabbit antiserum by affinity-chromatography using epitope-specific immunogen. |
| Isotype | IgG |
| Alias | CDC25C; M-phase inducer phosphatase 3; Dual specificity phosphatase Cdc25C |
| Immunogen Species | Homo sapiens (Human) |
| Target Names | CDC25C |

Image



Western Blot analysis of HuvEc cells using Phospho-Cdc25C (S216) Polyclonal Antibody



Western Blot analysis of VEC 293 A549 cells
using Phospho-Cdc25C (S216) Polyclonal
Antibody