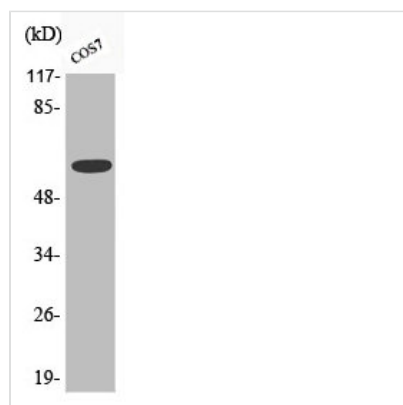




Phospho-CHEK2 (S516) Antibody

| | |
|----------------------------|---|
| Product Code | CSB-PA000499 |
| Storage | Upon receipt, store at -20°C or -80°C. Avoid repeated freeze. |
| Uniprot No. | O96017 |
| Immunogen | Synthesized peptide derived from Human Chk2 around the phosphorylation site of S516. |
| Raised In | Rabbit |
| Species Reactivity | Human,Monkey |
| Tested Applications | WB, ELISA; WB:1:500-1:2000, ELISA:1:10000 |
| Form | Liquid |
| Conjugate | Non-conjugated |
| Storage Buffer | Liquid in PBS containing 50% glycerol, 0.5% BSA and 0.02% sodium azide. |
| Purification Method | The antibody was affinity-purified from rabbit antiserum by affinity-chromatography using epitope-specific immunogen. |
| Isotype | IgG |
| Alias | CHEK2; CDS1; CHK2; RAD53; Serine/threonine-protein kinase Chk2; CHK2 checkpoint homolog; Cds1 homolog; Hucds1; hCds1; Checkpoint kinase 2 |
| Immunogen Species | Homo sapiens (Human) |
| Target Names | CHEK2 |

Image



Western Blot analysis of COS7 cells using Phospho-Chk2 (S516) Polyclonal Antibody