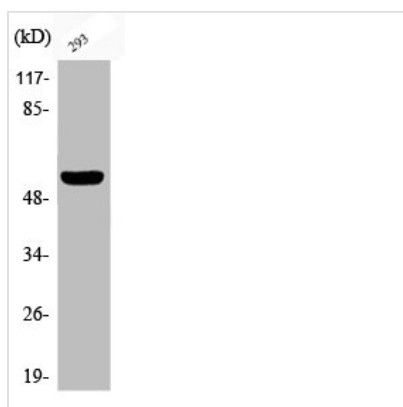




Phospho-DOK1 (Y362) Antibody

Product Code	CSB-PA000512
Storage	Upon receipt, store at -20°C or -80°C. Avoid repeated freeze.
Uniprot No.	Q99704
Immunogen	Synthesized peptide derived from Human Dok-1 around the phosphorylation site of Y362.
Raised In	Rabbit
Species Reactivity	Human,Mouse,Rat
Tested Applications	WB, IF, ELISA; WB:1:500-1:2000, IF:1:200-1:1000, ELISA:1:10000
Form	Liquid
Conjugate	Non-conjugated
Storage Buffer	Liquid in PBS containing 50% glycerol, 0.5% BSA and 0.02% sodium azide.
Purification Method	The antibody was affinity-purified from rabbit antiserum by affinity-chromatography using epitope-specific immunogen.
Isotype	IgG
Alias	DOK1; Docking protein 1; Downstream of tyrosine kinase 1; p62(dok); pp62
Immunogen Species	Homo sapiens (Human)
Target Names	DOK1

Image



Western Blot analysis of 293 cells using Phospho-Dok-1 (Y362) Polyclonal Antibody

Usage

For Research Use Only. Not for use in diagnostic or therapeutic procedures.