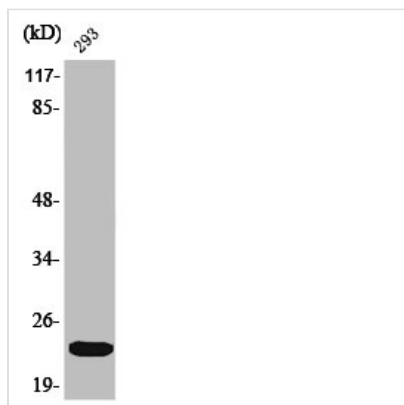




Phospho-EIF4E (S209) Antibody

Product Code	CSB-PA000519
Storage	Upon receipt, store at -20°C or -80°C. Avoid repeated freeze.
Uniprot No.	P06730
Immunogen	Synthesized peptide derived from Human eIF4E around the phosphorylation site of S209.
Raised In	Rabbit
Species Reactivity	Human,Mouse,Rat
Tested Applications	WB, IHC, ELISA; WB:1:500-1:2000, IHC:1:100-1:300, ELISA:1:20000
Form	Liquid
Conjugate	Non-conjugated
Storage Buffer	Liquid in PBS containing 50% glycerol, 0.5% BSA and 0.02% sodium azide.
Purification Method	The antibody was affinity-purified from rabbit antiserum by affinity-chromatography using epitope-specific immunogen.
Isotype	IgG
Alias	EIF4E; EIF4EL1; EIF4F; Eukaryotic translation initiation factor 4E; eIF-4E; eIF4E; eIF-4F 25 kDa subunit; mRNA cap-binding protein
Immunogen Species	Homo sapiens (Human)
Target Names	EIF4E

Image



Western Blot analysis of 293 cells using Phospho-eIF4E (S209) Polyclonal Antibody

Usage

For Research Use Only. Not for use in diagnostic or therapeutic procedures.