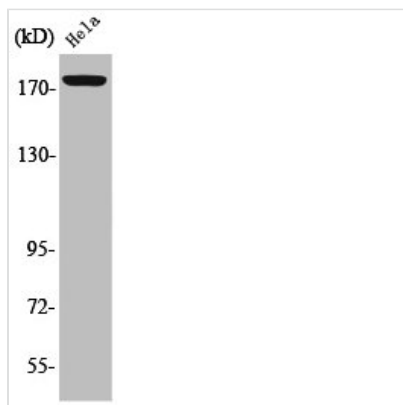




Phospho-ERBB2IP (Y1104) Antibody

Product Code	CSB-PA000521
Storage	Upon receipt, store at -20°C or -80°C. Avoid repeated freeze.
Uniprot No.	Q96RT1
Immunogen	Synthesized peptide derived from Human Erbin around the phosphorylation site of Y1104.
Raised In	Rabbit
Species Reactivity	Human
Tested Applications	WB, ELISA; WB:1:500-1:2000, ELISA:1:10000
Form	Liquid
Conjugate	Non-conjugated
Storage Buffer	Liquid in PBS containing 50% glycerol, 0.5% BSA and 0.02% sodium azide.
Purification Method	The antibody was affinity-purified from rabbit antiserum by affinity-chromatography using epitope-specific immunogen.
Isotype	IgG
Alias	ERBB2IP; ERBIN; KIAA1225; LAP2; Protein LAP2; Densin-180-like protein; ErbB2-interacting protein; Erbin
Immunogen Species	Homo sapiens (Human)
Target Names	ERBIN

Image



Western Blot analysis of HeLa cells using Phospho-Erbin (Y1104) Polyclonal Antibody

Usage

For Research Use Only. Not for use in diagnostic or therapeutic procedures.