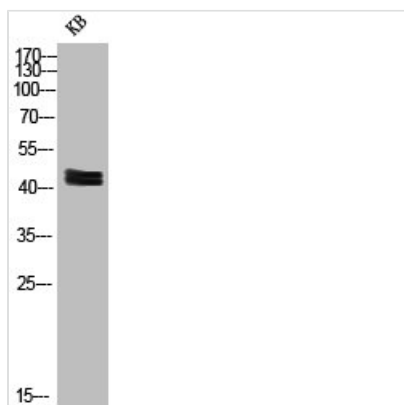




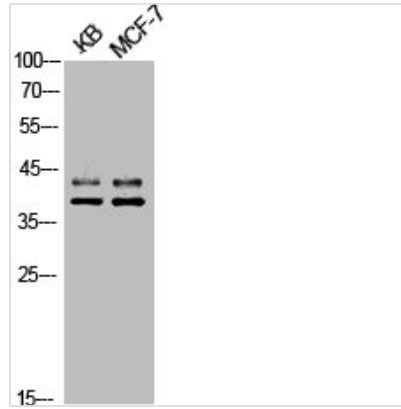
# Phospho-MAPK3/MAPK1 (T202) Antibody

<b>Product Code</b>	CSB-PA000522
<b>Storage</b>	Upon receipt, store at -20°C or -80°C. Avoid repeated freeze.
<b>Uniprot No.</b>	P27361/P28482
<b>Immunogen</b>	Synthesized peptide derived from Human ERK 1/2 around the phosphorylation site of T202.
<b>Raised In</b>	Rabbit
<b>Species Reactivity</b>	Human,Mouse,Rat
<b>Tested Applications</b>	WB, ELISA; WB:1:500-1:2000, ELISA:1:10000
<b>Form</b>	Liquid
<b>Conjugate</b>	Non-conjugated
<b>Storage Buffer</b>	Liquid in PBS containing 50% glycerol, 0.5% BSA and 0.02% sodium azide.
<b>Purification Method</b>	The antibody was affinity-purified from rabbit antiserum by affinity-chromatography using epitope-specific immunogen.
<b>Isotype</b>	IgG
<b>Alias</b>	MAPK3; ERK1; PRKM3; Mitogen-activated protein kinase 3; MAP kinase 3; MAPK 3; ERT2; Extracellular signal-regulated kinase 1; ERK-1; Insulin-stimulated MAP2 kinase; MAP kinase isoform p44; p44-MAPK; Microtubule-associated protein 2 kinase; p
<b>Immunogen Species</b>	Homo sapiens (Human)
<b>Target Names</b>	MAPK3/MAPK1

## Image



Western Blot analysis of KB cells using Phospho-ERK 1/2 (T202) Polyclonal Antibody



Western Blot analysis of KB MCF7 cells using Phospho-ERK 1/2 (T202) Polyclonal Antibody

**Usage**

For Research Use Only. Not for use in diagnostic or therapeutic procedures.