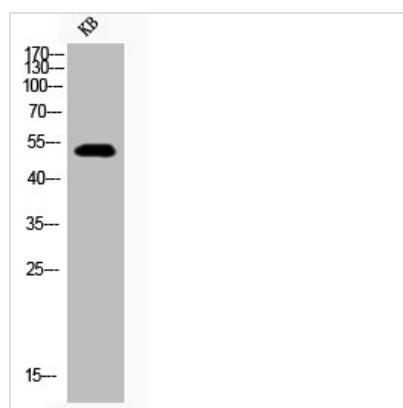




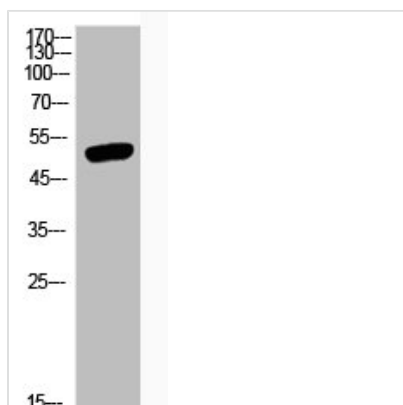
Phospho-GSK3A/GSK3B (Y279/216) Antibody

Product Code	CSB-PA000535
Storage	Upon receipt, store at -20°C or -80°C. Avoid repeated freeze.
Uniprot No.	P49840/P49841
Immunogen	Synthesized peptide derived from Human GSK3 α / β around the phosphorylation site of Y279/216.
Raised In	Rabbit
Species Reactivity	Human, Mouse, Rat
Tested Applications	WB, IHC, ELISA; WB:1:500-1:2000, IHC:1:100-1:300, ELISA:1:20000
Form	Liquid
Conjugate	Non-conjugated
Storage Buffer	Liquid in PBS containing 50% glycerol, 0.5% BSA and 0.02% sodium azide.
Purification Method	The antibody was affinity-purified from rabbit antiserum by affinity-chromatography using epitope-specific immunogen.
Isotype	IgG
Alias	GSK3A; Glycogen synthase kinase-3 alpha; GSK-3 alpha; Serine/threonine-protein kinase GSK3A; GSK3B; Glycogen synthase kinase-3 beta; GSK-3 beta; Serine/threonine-protein kinase GSK3B
Immunogen Species	Homo sapiens (Human)
Target Names	GSK3A/GSK3B

Image



Western Blot analysis of KB cells using Phospho-GSK3 α / β (Y279/216) Polyclonal Antibody



Western Blot analysis of various cells using
Phospho-GSK3 α/β (Y279/216) Polyclonal
Antibody