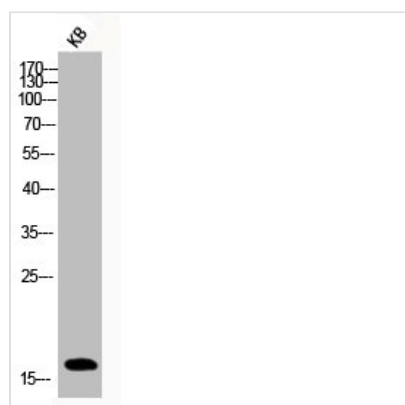




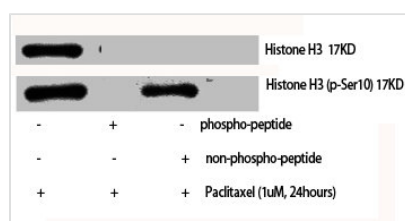
# Phospho-Histone H3 (S10) Antibody

<b>Product Code</b>	CSB-PA000541
<b>Storage</b>	Upon receipt, store at -20°C or -80°C. Avoid repeated freeze.
<b>Uniprot No.</b>	P68431/Q71DI3/P84243
<b>Immunogen</b>	Synthesized peptide derived from Human Histone H3 around the phosphorylation site of S10.
<b>Raised In</b>	Rabbit
<b>Species Reactivity</b>	Human,Mouse,Rat
<b>Tested Applications</b>	WB, IHC, IF, ELISA; WB:1:500-1:2000, IHC:1:100-1:300, IF:1:200-1:1000, ELISA:1:10000
<b>Form</b>	Liquid
<b>Conjugate</b>	Non-conjugated
<b>Storage Buffer</b>	Liquid in PBS containing 50% glycerol, 0.5% BSA and 0.02% sodium azide.
<b>Purification Method</b>	The antibody was affinity-purified from rabbit antiserum by affinity-chromatography using epitope-specific immunogen.
<b>Isotype</b>	IgG
<b>Alias</b>	HIST1H3A; H3FA; HIST1H3B; H3FL; HIST1H3C; H3FC; HIST1H3D; H3FB; HIST1H3E; H3FD; HIST1H3F; H3FI; HIST1H3G; H3FH; HIST1H3H; H3FK; HIST1H3I; H3FF; HIST1H3J; H3FJ; Histone H3.1; Histone H3/a; Histone H3/b; Histone H3/c; Histone H3/d; Histone H3
<b>Immunogen Species</b>	Homo sapiens (Human)
<b>Target Names</b>	HIST1H3A/HIST2H3A/H3F3A

## Image



Western Blot analysis of KB cells using Phospho-Histone H3 (S10) Polyclonal Antibody



Western Blot analysis of various cells using Phospho-Histone H3 (S10) Polyclonal Antibody

