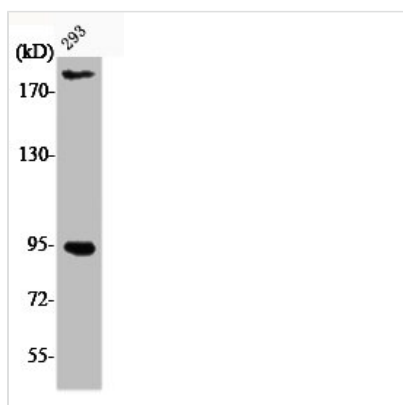




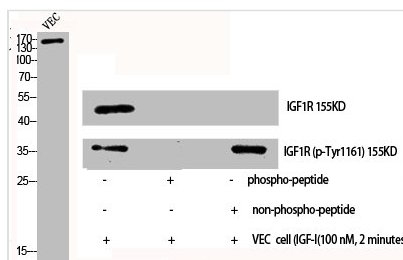
Phospho-IGF1R/INSR (Y1161) Antibody

Product Code	CSB-PA000548
Storage	Upon receipt, store at -20°C or -80°C. Avoid repeated freeze.
Uniprot No.	P08069/P06213
Immunogen	Synthesized peptide derived from Human IGF-IR around the phosphorylation site of Y1161.
Raised In	Rabbit
Species Reactivity	Human, Mouse, Rat
Tested Applications	WB, IHC, IP, ELISA; WB:1:500-1:2000, IHC:1:100-1:300, IP:2-5ug, ELISA:1:20000
Form	Liquid
Conjugate	Non-conjugated
Storage Buffer	Liquid in PBS containing 50% glycerol, 0.5% BSA and 0.02% sodium azide.
Purification Method	The antibody was affinity-purified from rabbit antiserum by affinity-chromatography using epitope-specific immunogen.
Isotype	IgG
Alias	IGF1R; Insulin-like growth factor 1 receptor; Insulin-like growth factor I receptor; IGF-I receptor; CD antigen CD221; INSR; Insulin receptor; IR; CD antigen CD220
Immunogen Species	Homo sapiens (Human)
Target Names	IGF1R/INSR

Image



Western Blot analysis of 293 cells using Phospho-IGF-IR (Y1161) Polyclonal Antibody



Western Blot analysis of VEC cells using Phospho-IGF-IR (Y1161) Polyclonal Antibody



Usage

For Research Use Only. Not for use in diagnostic or therapeutic procedures.