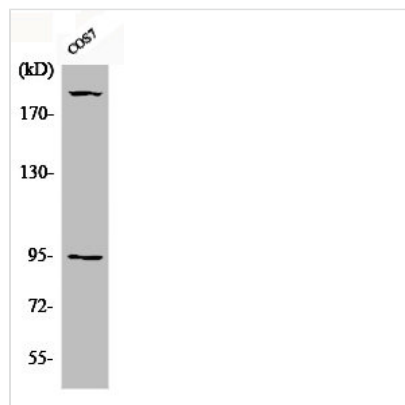




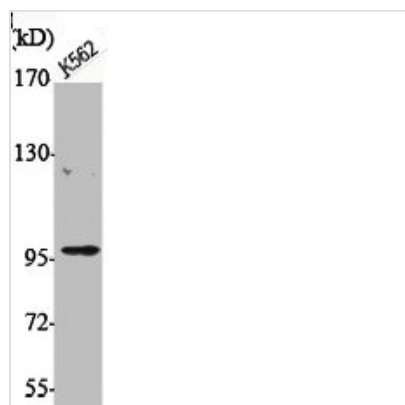
Phospho-IGF1R (Y1165/Y1166) Antibody

| | |
|----------------------------|---|
| Product Code | CSB-PA000549 |
| Storage | Upon receipt, store at -20°C or -80°C. Avoid repeated freeze. |
| Uniprot No. | P08069 |
| Immunogen | Synthesized peptide derived from Human IGF-IR around the phosphorylation site of Y1165/Y1166. |
| Raised In | Rabbit |
| Species Reactivity | Human,Mouse,Rat,Monkey |
| Tested Applications | WB, ELISA; WB:1:500-1:2000, ELISA:1:20000 |
| Form | Liquid |
| Conjugate | Non-conjugated |
| Storage Buffer | Liquid in PBS containing 50% glycerol, 0.5% BSA and 0.02% sodium azide. |
| Purification Method | The antibody was affinity-purified from rabbit antiserum by affinity-chromatography using epitope-specific immunogen. |
| Isotype | IgG |
| Alias | IGF1R; Insulin-like growth factor 1 receptor; Insulin-like growth factor I receptor; IGF-I receptor; CD antigen CD221 |
| Immunogen Species | Homo sapiens (Human) |
| Target Names | IGF1R |

Image



Western Blot analysis of COS7 cells using Phospho-IGF-IR (Y1165/Y1166) Polyclonal Antibody



Western Blot analysis of K562 cells using
Phospho-IGF-IR (Y1165/Y1166) Polyclonal
Antibody