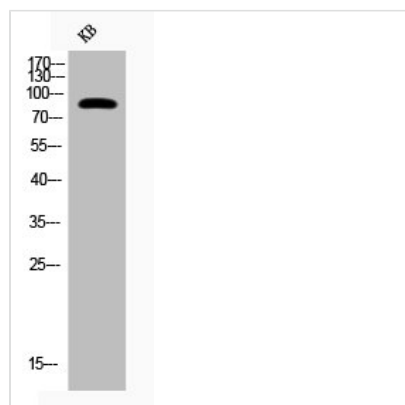




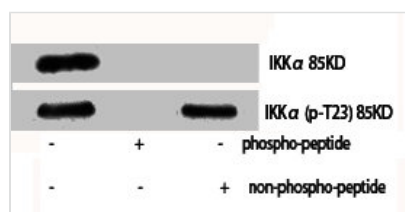
Phospho-CHUK (T23) Antibody

Product Code	CSB-PA000550
Storage	Upon receipt, store at -20°C or -80°C. Avoid repeated freeze.
Uniprot No.	O15111
Immunogen	Synthesized peptide derived from Human IKK α around the phosphorylation site of T23.
Raised In	Rabbit
Species Reactivity	Human, Mouse, Rat
Tested Applications	WB, IHC, ELISA; WB:1:500-1:2000, IHC:1:100-1:300, ELISA:1:5000
Form	Liquid
Conjugate	Non-conjugated
Storage Buffer	Liquid in PBS containing 50% glycerol, 0.5% BSA and 0.02% sodium azide.
Purification Method	The antibody was affinity-purified from rabbit antiserum by affinity-chromatography using epitope-specific immunogen.
Isotype	IgG
Alias	CHUK; IKKA; TCF16; Inhibitor of nuclear factor kappa-B kinase subunit alpha; I-kappa-B kinase alpha; IKK-A; IKK-alpha; IkbKA; IkappaB kinase; Conserved helix-loop-helix ubiquitous kinase; I-kappa-B kinase 1; IKK1; Nuclear factor NF-kappa-B
Immunogen Species	Homo sapiens (Human)
Target Names	CHUK

Image



Western Blot analysis of KB cells using Phospho-IKK α (T23) Polyclonal Antibody



Western Blot analysis of various cells using Phospho-IKK α (T23) Polyclonal Antibody