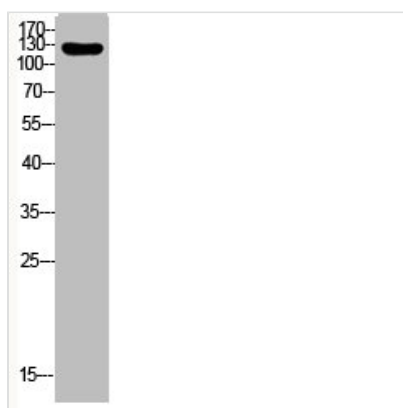




# Phospho-ITGB1 (T788) Antibody

|                            |   |
|----------------------------|---|
| <b>Product Code</b>        | CSB-PA000552  |
| <b>Storage</b>             | Upon receipt, store at -20°C or -80°C. Avoid repeated freeze.   |
| <b>Uniprot No.</b>         | P05556  |
| <b>Immunogen</b>           | Synthesized peptide derived from Human Integrin $\beta$ 1 around the phosphorylation site of T788.                    |
| <b>Raised In</b>           | Rabbit  |
| <b>Species Reactivity</b>  | Human, Mouse, Rat   |
| <b>Tested Applications</b> | WB, IHC, ELISA; WB:1:500-1:2000, IHC:1:100-1:300, ELISA:1:20000   |
| <b>Form</b>                | Liquid  |
| <b>Conjugate</b>           | Non-conjugated  |
| <b>Storage Buffer</b>      | Liquid in PBS containing 50% glycerol, 0.5% BSA and 0.02% sodium azide.   |
| <b>Purification Method</b> | The antibody was affinity-purified from rabbit antiserum by affinity-chromatography using epitope-specific immunogen. |
| <b>Isotype</b>             | IgG   |
| <b>Alias</b>               | ITGB1; FNRB; MDF2; MSK12; Integrin beta-1; Fibronectin receptor subunit beta; VLA-4 subunit beta; CD antigen CD29     |
| <b>Immunogen Species</b>   | Homo sapiens (Human)  |
| <b>Target Names</b>        | ITGB1   |

## Image



Western Blot analysis of various cells using Phospho-Integrin  $\beta$ 1 (T788) Polyclonal Antibody