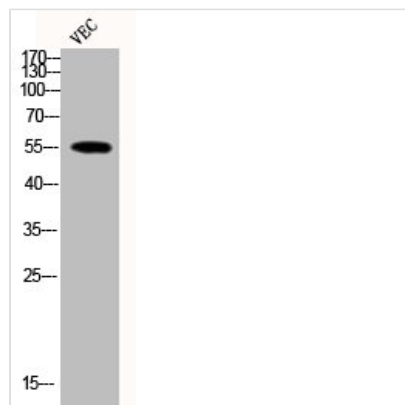




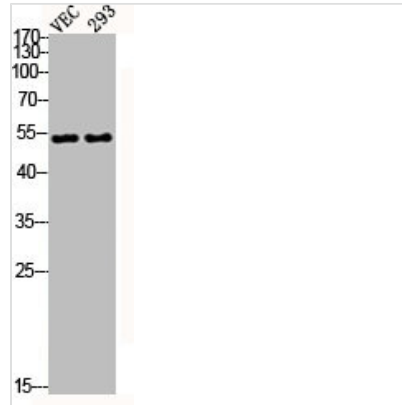
Phospho-MEF2A (T319) Antibody

Product Code	CSB-PA000568
Storage	Upon receipt, store at -20°C or -80°C. Avoid repeated freeze.
Uniprot No.	Q02078
Immunogen	Synthesized peptide derived from Human MEF-2 around the phosphorylation site of T319.
Raised In	Rabbit
Species Reactivity	Human,Mouse,Rat
Tested Applications	WB, IHC, ELISA; WB:1:500-1:2000, IHC:1:100-1:300, ELISA:1:20000
Form	Liquid
Conjugate	Non-conjugated
Storage Buffer	Liquid in PBS containing 50% glycerol, 0.5% BSA and 0.02% sodium azide.
Purification Method	The antibody was affinity-purified from rabbit antiserum by affinity-chromatography using epitope-specific immunogen.
Isotype	IgG
Alias	MEF2A; MEF2; Myocyte-specific enhancer factor 2A; Serum response factor-like protein 1
Immunogen Species	Homo sapiens (Human)
Target Names	MEF2A

Image



Western Blot analysis of VEC cells using Phospho-MEF-2 (T319) Polyclonal Antibody



Western Blot analysis of VEC 293 cells using Phospho-MEF-2 (T319) Polyclonal Antibody

Usage

For Research Use Only. Not for use in diagnostic or therapeutic procedures.