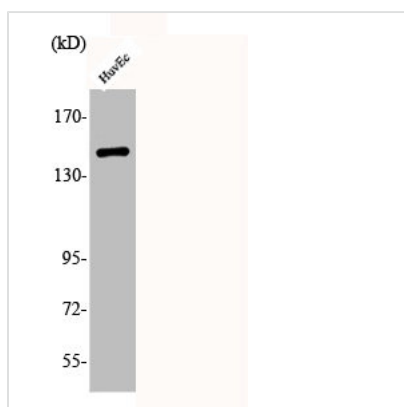




Phospho-MET (Y1234) Antibody

Product Code	CSB-PA000574
Storage	Upon receipt, store at -20°C or -80°C. Avoid repeated freeze.
Uniprot No.	P08581
Immunogen	Synthesized peptide derived from Human Met around the phosphorylation site of Y1234.
Raised In	Rabbit
Species Reactivity	Human,Mouse,Rat,Monkey
Tested Applications	WB, ELISA; WB:1:500-1:2000, ELISA:1:10000
Form	Liquid
Conjugate	Non-conjugated
Storage Buffer	Liquid in PBS containing 50% glycerol, 0.5% BSA and 0.02% sodium azide.
Purification Method	The antibody was affinity-purified from rabbit antiserum by affinity-chromatography using epitope-specific immunogen.
Isotype	IgG
Alias	MET; Hepatocyte growth factor receptor; HGF receptor; HGF/SF receptor; Proto-oncogene c-Met; Scatter factor receptor; SF receptor; Tyrosine-protein kinase Met
Immunogen Species	Homo sapiens (Human)
Target Names	MET

Image



Western Blot analysis of HuvEc cells using Phospho-Met (Y1234) Polyclonal Antibody

Usage For Research Use Only. Not for use in diagnostic or therapeutic procedures.