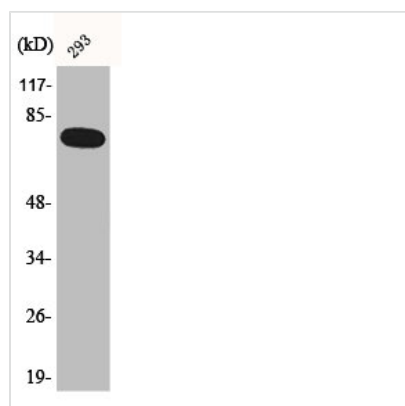




Phospho-RELA (S468) Antibody

Product Code	CSB-PA000583
Storage	Upon receipt, store at -20°C or -80°C. Avoid repeated freeze.
Uniprot No.	Q04206
Immunogen	Synthesized peptide derived from Human NFκB-p65 around the phosphorylation site of S468.
Raised In	Rabbit
Species Reactivity	Human,Mouse,Rat
Tested Applications	WB, IHC, IP, ELISA; WB:1:500-1:2000, IHC:1:100-1:300, IP:2-5ug, ELISA:1:20000
Form	Liquid
Conjugate	Non-conjugated
Storage Buffer	Liquid in PBS containing 50% glycerol, 0.5% BSA and 0.02% sodium azide.
Purification Method	The antibody was affinity-purified from rabbit antiserum by affinity-chromatography using epitope-specific immunogen.
Isotype	IgG
Alias	RELA; NFKB3; Transcription factor p65; Nuclear factor NF-kappa-B p65 subunit; Nuclear factor of kappa light polypeptide gene enhancer in B-cells 3
Immunogen Species	Homo sapiens (Human)
Target Names	RELA

Image



Western Blot analysis of 293 cells using Phospho-NFκB-p65 (S468) Polyclonal Antibody