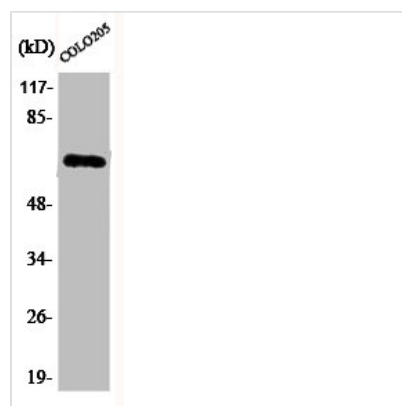




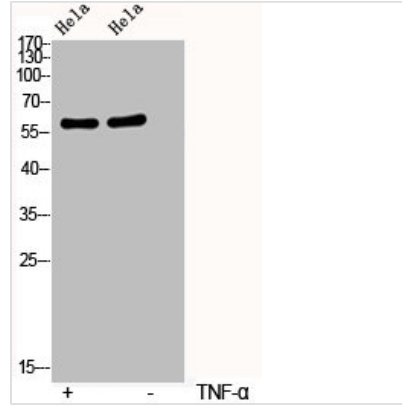
Phospho-RELA (S536) Antibody

Product Code	CSB-PA000586
Storage	Upon receipt, store at -20°C or -80°C. Avoid repeated freeze.
Uniprot No.	Q04206
Immunogen	Synthesized peptide derived from Human NFκB-p65 around the phosphorylation site of S536.
Raised In	Rabbit
Species Reactivity	Human,Mouse,Rat,Monkey
Tested Applications	WB,IHC,IP,ELISA;WB:1/500-1/2000.IHC:1/100-1/300.IP:2-5ug/mglysate.ELISA:1/10000
Form	Liquid
Conjugate	Non-conjugated
Storage Buffer	Liquid in PBS containing 50% glycerol, 0.5% BSA and 0.02% sodium azide.
Purification Method	The antibody was affinity-purified from rabbit antiserum by affinity-chromatography using epitope-specific immunogen.
Isotype	IgG
Alias	RELA; NFKB3; Transcription factor p65; Nuclear factor NF-kappa-B p65 subunit; Nuclear factor of kappa light polypeptide gene enhancer in B-cells 3
Species	Homo sapiens (Human)
Target Names	RELA

Image



Western Blot analysis of COLO205 cells using Phospho-NFκB-p65 (S536) Polyclonal Antibody



Western Blot analysis of HELA cells using Phospho-NFκB-p65 (S536) Polyclonal Antibody