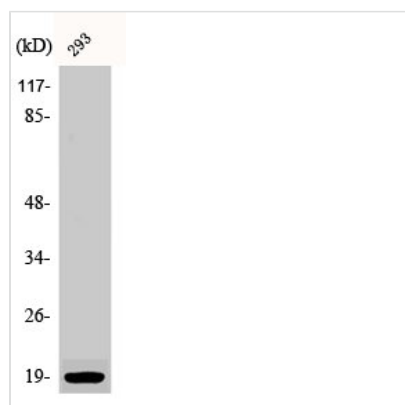




Phospho-STMN1 (S16) Antibody

Product Code	CSB-PA000588
Storage	Upon receipt, store at -20°C or -80°C. Avoid repeated freeze.
Uniprot No.	P16949
Immunogen	Synthesized peptide derived from Human Op18 around the phosphorylation site of S16.
Raised In	Rabbit
Species Reactivity	Human,Mouse,Rat
Tested Applications	WB, IHC, IF, ELISA; WB:1:500-1:2000, IHC:1:100-1:300, IF:1:200-1:1000, ELISA:1:10000
Form	Liquid
Conjugate	Non-conjugated
Storage Buffer	Liquid in PBS containing 50% glycerol, 0.5% BSA and 0.02% sodium azide.
Purification Method	The antibody was affinity-purified from rabbit antiserum by affinity-chromatography using epitope-specific immunogen.
Isotype	IgG
Alias	STMN1; C1orf215; LAP18; OP18; Stathmin; Leukemia-associated phosphoprotein p18; Metablastin; Oncoprotein 18; Op18; Phosphoprotein p19; pp19; Prosolin; Protein Pr22; pp17
Immunogen Species	Homo sapiens (Human)
Target Names	STMN1

Image



Western Blot analysis of 293 cells using Phospho-Op18 (S16) Polyclonal Antibody

Usage For Research Use Only. Not for use in diagnostic or therapeutic procedures.