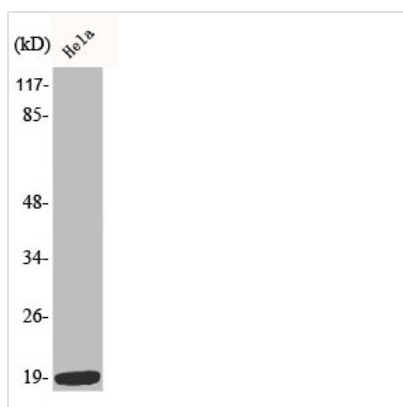




Phospho-STMN1 (S38) Antibody

Product Code	CSB-PA000590
Storage	Upon receipt, store at -20°C or -80°C. Avoid repeated freeze.
Uniprot No.	P16949
Immunogen	Synthesized peptide derived from Human Op18 around the phosphorylation site of S38.
Raised In	Rabbit
Species Reactivity	Human,Mouse,Rat,Monkey
Tested Applications	WB, IHC, ELISA; WB:1:500-1:2000, IHC:1:100-1:300, ELISA:1:20000
Form	Liquid
Conjugate	Non-conjugated
Storage Buffer	Liquid in PBS containing 50% glycerol, 0.5% BSA and 0.02% sodium azide.
Purification Method	The antibody was affinity-purified from rabbit antiserum by affinity-chromatography using epitope-specific immunogen.
Isotype	IgG
Alias	STMN1; C1orf215; LAP18; OP18; Stathmin; Leukemia-associated phosphoprotein p18; Metablastin; Oncoprotein 18; Op18; Phosphoprotein p19; pp19; ProsoLin; Protein Pr22; pp17
Immunogen Species	Homo sapiens (Human)
Target Names	STMN1

Image



Western Blot analysis of HeLa cells using Phospho-Op18 (S38) Polyclonal Antibody

Usage

For Research Use Only. Not for use in diagnostic or therapeutic procedures.