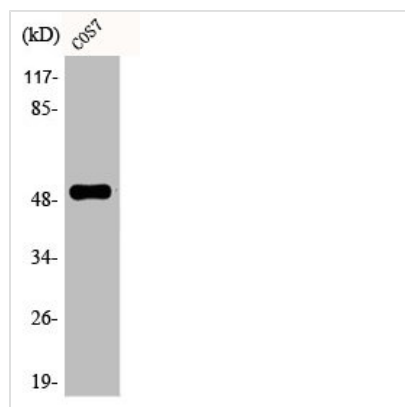




Phospho-TP53 (S6) Antibody

| | |
|----------------------------|---|
| Product Code | CSB-PA000600 |
| Storage | Upon receipt, store at -20°C or -80°C. Avoid repeated freeze. |
| Uniprot No. | P04637 |
| Immunogen | Synthesized peptide derived from Human p53 around the phosphorylation site of S6. |
| Raised In | Rabbit |
| Species Reactivity | Human,Monkey |
| Tested Applications | WB, IHC, IP, ELISA; WB:1:500-1:2000, IHC:1:100-1:300, IP:2-5ug, ELISA:1:10000 |
| Form | Liquid |
| Conjugate | Non-conjugated |
| Storage Buffer | Liquid in PBS containing 50% glycerol, 0.5% BSA and 0.02% sodium azide. |
| Purification Method | The antibody was affinity-purified from rabbit antiserum by affinity-chromatography using epitope-specific immunogen. |
| Isotype | IgG |
| Alias | TP53; P53; Cellular tumor antigen p53; Antigen NY-CO-13; Phosphoprotein p53; Tumor suppressor p53 |
| Immunogen Species | Homo sapiens (Human) |
| Target Names | TP53 |

Image



Western Blot analysis of COS7 cells using Phospho-p53 (S6) Polyclonal Antibody

Usage For Research Use Only. Not for use in diagnostic or therapeutic procedures.