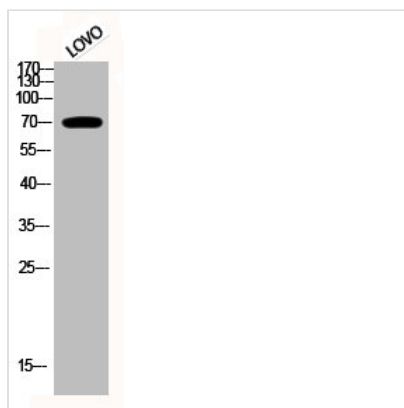




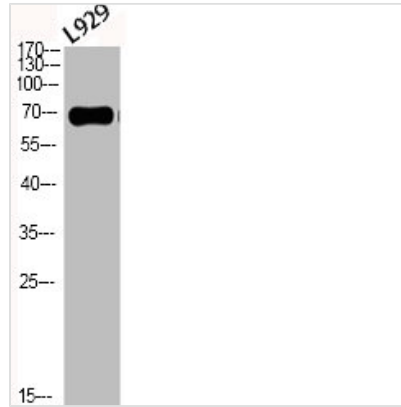
# Phospho-RPS6KB1 (T229) Antibody

<b>Product Code</b>	CSB-PA000605
<b>Storage</b>	Upon receipt, store at -20°C or -80°C. Avoid repeated freeze.
<b>Uniprot No.</b>	P23443
<b>Immunogen</b>	Synthesized peptide derived from Human p70 S6 kinase $\alpha$ around the phosphorylation site of T229.
<b>Raised In</b>	Rabbit
<b>Species Reactivity</b>	Human, Mouse, Rat
<b>Tested Applications</b>	WB, IHC, IF, ELISA; WB:1:500-1:2000, IHC:1:100-1:300, IF:1:200-1:1000, ELISA:1:5000
<b>Form</b>	Liquid
<b>Conjugate</b>	Non-conjugated
<b>Storage Buffer</b>	Liquid in PBS containing 50% glycerol, 0.5% BSA and 0.02% sodium azide.
<b>Purification Method</b>	The antibody was affinity-purified from rabbit antiserum by affinity-chromatography using epitope-specific immunogen.
<b>Isotype</b>	IgG
<b>Alias</b>	RPS6KB1; STK14A; Ribosomal protein S6 kinase beta-1; S6K-beta-1; S6K1; 70 kDa ribosomal protein S6 kinase 1; P70S6K1; p70-S6K 1; Ribosomal protein S6 kinase I; Serine/threonine-protein kinase 14A; p70 ribosomal S6 kinase alpha; p70 S6 kinas
<b>Immunogen Species</b>	Homo sapiens (Human)
<b>Target Names</b>	RPS6KB1

## Image



Western Blot analysis of LOVO cells using Phospho-p70 S6 kinase  $\alpha$  (T229) Polyclonal Antibody



Western Blot analysis of L929 cells using Phospho-p70 S6 kinase  $\alpha$  (T229) Polyclonal Antibody

**Usage**

For Research Use Only. Not for use in diagnostic or therapeutic procedures.