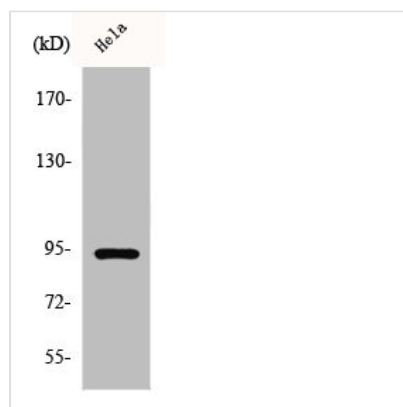




Phospho-STAT6 (T645) Antibody

Product Code	CSB-PA000624
Storage	Upon receipt, store at -20°C or -80°C. Avoid repeated freeze.
Uniprot No.	P42226
Immunogen	Synthesized peptide derived from Human Stat6 around the phosphorylation site of T645.
Raised In	Rabbit
Species Reactivity	Human,Mouse,Rat
Tested Applications	WB, IHC, IP, ELISA; WB:1:500-1:2000, IHC:1:100-1:300, IP:2-5ug, ELISA:1:10000
Form	Liquid
Conjugate	Non-conjugated
Storage Buffer	Liquid in PBS containing 50% glycerol, 0.5% BSA and 0.02% sodium azide.
Purification Method	The antibody was affinity-purified from rabbit antiserum by affinity-chromatography using epitope-specific immunogen.
Isotype	IgG
Alias	STAT6; Signal transducer and activator of transcription 6; IL-4 Stat
Immunogen Species	Homo sapiens (Human)
Target Names	STAT6

Image



Western Blot analysis of HeLa cells using Phospho-Stat6 (T645) Polyclonal Antibody